

Jayco | 2024 Jay Flight Travel Trailer



JAY FLIGHT

#1 SELLING TRAVEL TRAILER FOR 15 YEARS



2+3
YEAR | YEAR
WARRANTY

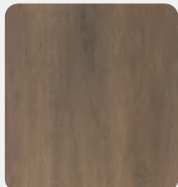
INTERIOR DESIGN



CLASSIC FARMHOUSE



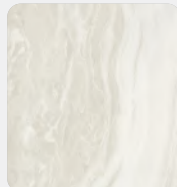
Main Wood



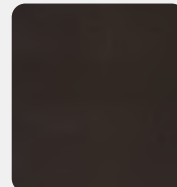
Accent Wood



Floor



Countertop



Main Fabric



Accent Fabric

2120B



224BH



225MLS



235MBH



236TH



240RBS OPTION: A



247RBS



263RBS OPTION: A



264BH



265RLS OPTIONS: A, B, C



OPTIONS

- STORAGE
- MICRO** MICROWAVE
- OHC** OVERHEAD CABINETS
- FRIDGE** REFRIGERATOR
- WARD** WARDROBE

- A**

Hide-a-Bed
- B**

Table & Chairs
- C**

Theater Seat

265TH



267BHS OPTIONS: A, C



274BH



280BHK OPTIONS: A, C



280RKS OPTIONS: A, B, C



284BHS OPTIONS: A, C



285BHS OPTIONS: A, C



2940BS OPTIONS: A, C



324BDS OPTIONS: A, C, D



OPTIONS

- STORAGE
- MICRO MICROWAVE
- OHC OVERHEAD CABINETS
- FRIDGE REFRIGERATOR
- WARD WARDROBE

- A**

Hide-a-Bed
- B**

Table & Chairs
- C**

Theater Seat
- D**

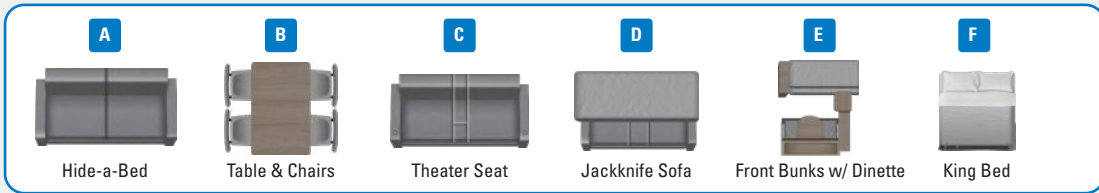
Jackknife Sofa

331BTS OPTIONS: A, D

334RTS OPTIONS: A, B, F

340RLK OPTIONS: A, F

380DQS OPTIONS: A, C, E, F

OPTIONS


*Indicates split tanks

FLOORPLAN	EXTERIOR TRAVEL LENGTH	EXTERIOR WIDTH	EXTERIOR HEIGHT (WITH A/C)	INTERIOR HEIGHT	UNLOADED VEHICLE WEIGHT	DRY HITCH WEIGHT	GVWR	CARGO CARRYING CAPACITY	FRESH WATER CAPACITY (INCLUDING WATER HEATER)	GRAY WASTE WATER CAPACITY	BLACK WASTE WATER CAPACITY	SLEEPING CAPACITY
212QB	25' 8"	8' 0"	10' 7"	6' 9"	4,390	520	5,675	1,285	52	39	33	3-5
224BH	27' 1"	8' 0"	10' 7"	6' 9"	4,585	525	5,850	1,265	52	39	39	6-8
225MLS	27' 1"	8' 0"	11' 1"	6' 9"	5,300	580	6,700	1,400	52	39	39	1-3
235MBH	27' 10"	8' 0"	11' 1"	6' 9"	5,660	680	6,850	1,190	52	39	39	5-7
236TH	28' 4"	8' 0"	10' 6"	6' 9"	5,060	885	7,500	2,440	52	39	39	2-4
240RBS	27' 4"	8' 0"	11' 0"	6' 9"	5,690	715	7,000	1,310	52	78*	39	2-4
247RBS	28' 10"	8' 0"	11' 1"	6' 9"	5,480	650	6,750	1,270	52	39	39	3-5
263RBS	30' 1"	8' 0"	11' 2"	6' 9"	6,055	810	7,500	1,445	52	78*	39	3-5
264BH	29' 5"	8' 0"	10' 6"	6' 9"	4,755	560	6,200	1,445	52	39	39	7-9
265RLS	31' 1"	8' 0"	11' 1"	6' 9"	6,175	800	7,500	1,325	52	39	39	4-6
265TH	30' 4"	8' 0"	10' 6"	6' 9"	5,320	850	7,600	2,280	52	39	39	4-6
267BHS	30' 4"	8' 0"	11' 2"	6' 9"	5,850	760	7,100	1,250	52	39	39	8-10
274BH	30' 7"	8' 0"	10' 7"	6' 9"	5,165	660	6,500	1,335	52	78*	39	7-9
280BHK	34' 7"	8' 0"	11' 3"	6' 9"	6,660	800	8,250	1,590	52	78*	39	7-9
280RKS	33' 10"	8' 0"	11' 3"	6' 9"	6,525	850	8,150	1,625	52	78*	39	4-6
284BHS	33' 7"	8' 0"	11' 1"	6' 9"	6,365	880	7,950	1,585	52	39	39	8-10
285BHS	33' 4"	8' 0"	11' 4"	6' 9"	6,510	875	8,150	1,640	52	78*	39	6-8
294QBS	35' 7"	8' 0"	11' 3"	6' 9"	6,655	870	8,250	1,595	52	39	39	8-10
324BDS	36' 4"	8' 0"	11' 3"	6' 9"	7,635	1,050	9,000	1,365	52	32.5	39	8-10
331BTS	37' 10"	8' 0"	11' 3"	6' 9"	8,635	1,210	9,995	1,360	52	71.5*	39	6-8
334RTS	37' 10"	8' 0"	11' 2"	6' 9"	8,660	1,190	10,250	1,590	52	71.5*	39	3-5
340RLK	37' 10"	8' 0"	11' 3"	6' 9"	8,890	1,235	10,350	1,460	52	71.5*	39	2-4
380DQS	40' 4"	8' 0"	11' 3"	6' 9"	8,375	1,005	9,995	1,620	52	39	39	3-5

Some specs at the time of print may include estimates. For the most updated information, please visit Jayco.com

STANDARDS & OPTIONS

EXTERIOR

20 lb. propane bottles with cover (2)
 30-amp service
 5/8 in. tongue-and-groove plywood floor decking
 Axles with electric, self-adjusting brakes and easy-lube hubs
 Enclosed and heated underbelly
 Exterior TV mount and bracket
 Front diamond plate
 Fully integrated A-frame
 Galvanized steel, impact-resistant wheel wells
 I-Class™ cambered structural steel I-beams
 Large exterior downspouts
 Propane quick connect (outside gas grill prep)
 Magnum Truss™ Roof system with plywood decking
 Seamless one piece roof material

INTERIOR

300 lb. rated bunk beds (select models)
 4 in. thick bunk mats (select models)
 600 lb. rated bunk beds (double bunks)
 8 cu. ft. 12V refrigerator
 81 in. ceiling height
 Heavy-duty, 75 lb., full-extension, steel ball-bearing drawer guides
 J-Steel™ jackknife sofa with armrest and cup holders (most models)
 Main bed struts
 Plywood bed platforms
 Privacy curtains in bunk areas (select models)
 Queen mattress
 Residential-style kitchen countertops
 Shower curtain with curved shower track (select models)
 Shower/tub surround

Smoked-glass cabinet door inserts (select models)
 Solid hardwood cabinet doors
 USB charging station
 Vented bunk windows (select models)
 Vinyl flooring throughout (including slide floors)
 Window shades
 Wooden bedroom doors (select models)

CUSTOMER VALUE PACKAGE (MANDATORY)

13.5K BTU A/C
 AM/FM/Bluetooth® stereo
 Backup and side view camera prep
 Bathroom medicine cabinet
 Bathroom power vent
 Bathroom skylight
 Black tank flush
 Detachable power cord
 Fitted bed sheet
 Friction hinge entry door with window and shade prep
 G20 dark tinted privacy windows
 Goodyear® Endurance® tires (made in the USA)
 Inverter pre-wire
 Keyed-Alike™ entry and baggage doors
 Large main entry door grab handle
 LED exterior and interior lights
 Marine grade exterior speakers
 Microwave oven
 On-demand tankless water heater
 One-piece front fiberglass exterior wall
 Outside shower
 Oven with 3-burner recessed cooktop with glass cover
 Overlander 1 Solar Package: (1) 200W solar panel and 30-amp digital controller

Power awning with LED lights
 Power tongue jack
 Range hood
 Rock-Solid Stabilizer System
 Seamless countertops
 Sink cover
 Solid Step® entry steps (N/A 380DQS)
 Spare tire with cover

OPTIONS

15,000 BTU A/C
 2nd A/C in bedroom (select models)
 50-amp service
 Chil N' Stor (264BH)
 Fiberglass sidewalls (select models)
 Front bunks with dinette (380DQS)
 Hide-a-bed with tri-fold mattress (select models)
 King bed (340RLK, 334RTS, 380DQS)
 LED Smart TV (standard on 284BHS, 334RTS, 340RLK)
 Outside griddle with bumper mount (select models)
 Rear sofa with folding bunk (331BTS)
 Roof ladder (N/A 236TH and 265TH)

Meet your Jayco Dealer



Scan QR code for specification definitions

Some specs at the time of print may include estimates. For the most updated information, please visit Jayco.com

Jayco, Inc. | P.O. Box 460 | Middlebury, IN 46540

See dealer for further information and prices. All information in this brochure and on www.jayco.com is the latest available at the time of publication approval. Jayco reserves the right to make changes and to discontinue models without notice or obligation. Photography may show optional equipment or props used for decoration purposes only. RVs built for sale in Canada may differ to conform to Canadian codes. JAYCO and the JAYCO BIRD IN FLIGHT are registered trademarks of Jayco, Inc. Printed in USA 10/23 ©2023 Jayco, Inc.



Jayco - Part of Jayco Family of Companies

Jayco | 2024 Jay Flight West Travel Trailer

JAY FLIGHT WEST

#1 SELLING TRAVEL TRAILER FOR 15 YEARS



2+3
YEAR | YEAR
WARRANTY

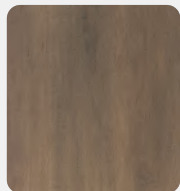
INTERIOR DESIGN



CLASSIC FARMHOUSE



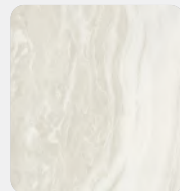
Main Wood



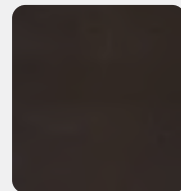
Accent Wood



Floor



Countertop



Main Fabric



Accent Fabric



JAY FLIGHT WEST

212QBW



MICRO
OHC
FRIDGE
WARD

STORAGE
MICROWAVE
OVERHEAD CABINETS
REFRIGERATOR
WARDROBE

224BHW



225MLSW



OPTIONS

A



Hide-a-Bed

B



Theater Sofa

C



Table & Chairs

235MBHW



236THW



240RBSW

OPTION: A



255THW



264BHW



265RLSW

OPTIONS: A, B, C



265THW



267BHSW

OPTIONS: A, B, C



286BHSW

OPTIONS: A, B, C



STANDARDS & OPTIONS

EXTERIOR

(2) 20 lb. propane bottles with cover
30-amp service
5/8 in. tongue-and-groove plywood floor decking
Axles with electric, self-adjusting brakes and easy-lube hubs
Enclosed and heated underbelly
Exterior TV mount and bracket
Fully integrated A-frame
Galvanized steel, impact-resistant wheel wells
I-Class™ cambered structural steel I-beams
Large exterior downspouts
Propane quick connect (outside gas grill prep)
Magnum Truss™ Roof system with plywood decking
Seamless one piece roof material

INTERIOR

300 lb. rated bunk beds (select models)
4 in. thick bunk mats (select models)
600 lb. rated bunk beds (double bunks)
81 in. ceiling height
Heavy-duty, 75 lb., full-extension, steel ball-bearing drawer guides
J-Steel™ jackknife sofa with armrest and cup holders (most models)
Main bed struts
Plywood bed platforms
Privacy curtains in bunk areas (select models)
Queen mattress
Residential-style kitchen countertops
Shower curtain with curved shower track (select models)

Shower/tub surround
Solid hardwood cabinet doors
USB charging station
Vented bunk windows (select models)
Vinyl flooring throughout (including slide floors)
Window shades
Wooden bedroom doors (select models)

CUSTOMER VALUE PACKAGE (MANDATORY)

13.5K BTU A/C
AM/FM/Bluetooth® stereo
Backup and side view camera prep
Bathroom medicine cabinet
Bathroom power vent
Bathroom skylight
Black tank flush
Detachable power cord
Fitted bed sheet
Friction hinge entry door with window and shade prep
G20 dark tinted privacy windows
Goodyear® Endurance® tires (made in the USA)
Inverter pre-wire
Keyed-Alike™ entry and baggage doors
Large main entry door grab handle
LED exterior and interior lights
Marine grade exterior speakers
Microwave oven
On-demand tankless water heater
One-piece front fiberglass exterior wall
Outside shower
Oven with 3-burner recessed cooktop with glass cover

Overlander 1 Solar Package: (1) 200W solar panel and 30-amp digital controller
Power awning with LED lights
Power tongue jack
Range hood
Rock-Solid Stabilizer System
Seamless countertops
Sink cover
Solid Step® entry steps (N/A 380DQS)
Spare tire with cover

BAJA EDITION PACKAGE (OPTIONAL) (N/A 236TH & 265TH)

(2) 30 lb. propane bottles
Flipped axle
16 in. Goodyear® off-road tires
Triple steps

OPTIONS

15,000 BTU A/C
30 lb. propane bottles
50-amp service
Aluminum rims
Baja Edition (N/A 236TH, 255TH and 265TH)
Free standing table with 4 chairs (select models)
Hide-a-bed with tri-fold mattress (select models)
LED Smart TV
Outside griddle with bumper mount (select models)
Theatre seating (select models)

*Indicates split tanks
** 2023 specs shown

FLOORPLAN	EXTERIOR TRAVEL LENGTH	EXTERIOR WIDTH	EXTERIOR HEIGHT (WITH A/C)	INTERIOR HEIGHT	UNLOADED VEHICLE WEIGHT	DRY HITCH WEIGHT	GVWR	CARGO CARRYING CAPACITY	FRESH WATER CAPACITY	GRAY WASTE WATER CAPACITY	BLACK WASTE WATER CAPACITY	SLEEPING CAPACITY
212QBW	25' 8"	8' 0"	10' 6"	6' 9"	4,350	465	5,000	1,650	84	39	32.5	3-5
224BHW	27' 1"	8' 0"	10' 6"	6' 9"	4,620	560	6,100	1,480	84	39	39	6-8
225MLSW	27' 1"	8' 0"	TBD	6' 9"	TBD	TBD	TBD	TBD	TBD	TBD	TBD	1-3
235MBHW	27' 10"	8' 0"	TBD	6' 9"	TBD	TBD	TBD	TBD	TBD	TBD	TBD	5-7
**236THW	28' 4"	8' 0"	10' 6"	6' 9"	TBD	TBD	TBD	TBD	TBD	TBD	TBD	2-4
240RBSW	27' 4"	8' 0"	11' 0"	6' 9"	5,815	715	7,500	1,685	76	78*	39	3-5
255THW	30' 0"	8' 0"	12' 9"	8' 5"/7' 1"	5,615	835	8,750	3,135	84	40	40	2-4
264BHW	29' 5"	8' 0"	10' 5"	6' 9"	4,840	540	6,500	1,660	84	39	39	7-9
265RLSW	31' 1"	8' 0"	11' 2"	6' 9"	6,205	790	7,850	1,645	84	39	39	TBD
265THW	30' 4"	8' 0"	10' 6"	6' 9"	5,470	900	8,000	2,530	84	39	39	4-6
267BHSW	30' 4"	8' 0"	10' 11"	6' 9"	5,905	790	7,600	1,695	76	39	39	8-10
286BHSW	33' 4"	8' 0"	11' 3"	6' 9"	6,405	835	8,150	1,745	84	78*	39	8-10

Meet your Jayco Dealer



LaMesaRV.com
800-496-8778



Some specs at the time of print may include estimates.
For the most updated information, please visit Jayco.com

Jayco, Inc. | P.O. Box 460 | Middlebury, IN 46540

See dealer for further information and prices. All information in this brochure and on www.jayco.com is the latest available at the time of publication approval. Jayco reserves the right to make changes and to discontinue models without notice or obligation. Photography may show optional equipment or props used for decoration purposes only. RVs built for sale in Canada may differ to conform to Canadian codes. JAYCO and the JAYCO BIRD IN FLIGHT are registered trademarks of Jayco, Inc. Printed in USA 10/23 ©2023 Jayco, Inc.



Jayco - Part of Jayco Family of Companies